

PRIMARY PROGRAMME 2024/25

With schools at the heart of the charity, our aspiration is for TeamMCR to be a recognised strategic partner in the wider Manchester educational landscape.

We will achieve this by working with and through partners to tackle the wellbeing crisis facing our children and young people; championing the use of physical activity and sport as tools. We will also continue to use our charitable status to generate income, to keep costs down for the schools we serve.

TeamMCR is more than the competitions, events and festivals programme we offer. We want to understand and address the challenges faced by schools and young people and lobby support from local and national partners.



Message from Eamonn O'Rourke, Team MCR Chair of Trustees

I would like to welcome and thank you for joining us again for the 2024-25 academic year.

This year, we are delighted to announce our new partnership with MPETT, providing a number of exciting new opportunities for schools. We believe that our new membership package provides a comprehensive offer and offers a key focus on continuing professional development, competitions and events, health and wellbeing, leadership programmes, schools to community links and inclusion.

This new partnership enhances our aim of being a leading Manchester charity that is passionate about developing the whole child through PE, as well as sport and PA. We aim to make Manchester's children and young people the most active in Greater Manchester. Relationships are a key part of this for us and we are proud to have consistently engaged with over 80% of schools in the city through our programmes.

I wish you an active and enjoyable year with Team MCR and we look forward to seeing your children and young people enjoying all of the many opportunities across Manchester.

VISION

Giving all young people equal access to better life chances, choices and skills through sport, physical activity, health and other life changing opportunities.

PURPOSE

To provide the young people of Manchester with a rich and diverse range of enrichment opportunities that promote physical activity, sport and wellbeing to make a life-long positive impact to them and their communities.

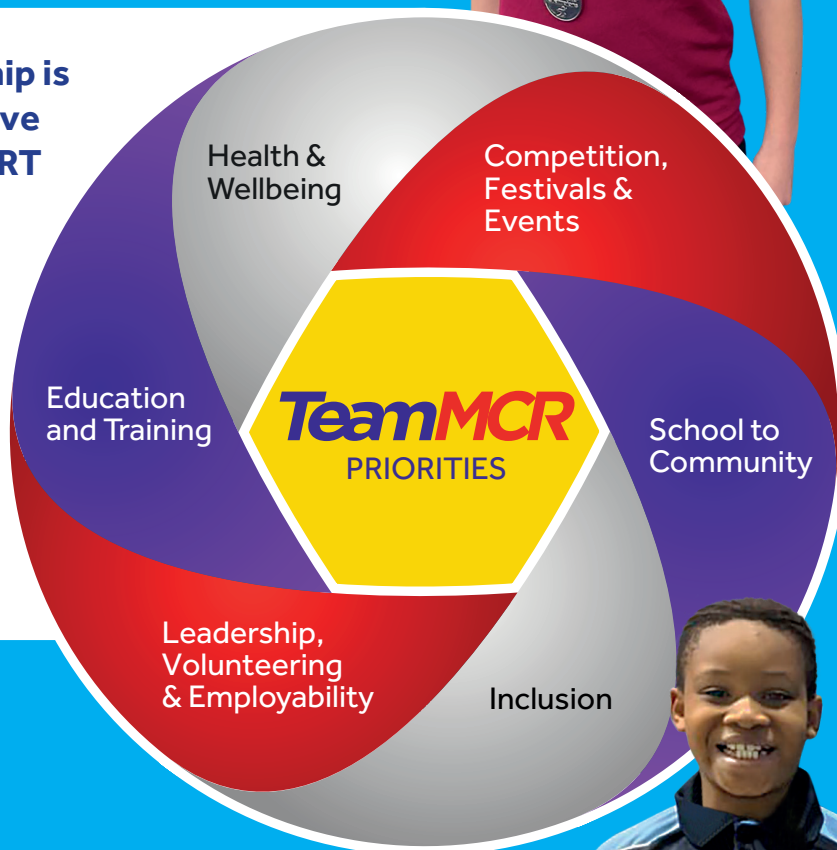
We are delighted to launch our partnership with MPETT and the combined membership offer for 2024/25.

The amalgamation of TeamMCR & MPETT will now enable us to offer a comprehensive package to support schools and ensure that we work more effectively together; whilst maximizing our strengths and resources fully for the benefit of the partners we serve. The young people, teachers and schools across MCR are the focus of everything we do and we seek to create a whole school impact through our extensive programme.



TeamMCR's membership is designed to address the five key priorities of PE & SPORT PREMIUM RING FENCED FUNDING.

This funding is guaranteed for the academic year 2024/25. If government funding arrangements change for 25/26 or 26/27, all SLA's will be null and void. In this eventuality, TeamMCR will consult, and re-evaluate its membership offer if necessary.



Schools should prioritise PE and sport premium spending to improve in the following 5 key areas:

- 1 Increased confidence, knowledge and skills of all staff in teaching PE and sport
- 2 The engagement of all pupils in regular physical activity
- 3 The profile of PE and sport is raised across the school as a tool for whole-school improvement
- 4 Broader experience of a range of sports and activities offered to all pupils
- 5 Increased participation in competitive sport

This year will see us working with more partners from across the city as well as feeding into national policy about the future of PE, sport and physical activity representing our members. We will also continue to maximize our charitable status for the benefit of the children and young people in MCR.



Members Benefits 2024/25

	PARTNERSHIP PACKAGE £1350	ENHANCED PACKAGE £1850
PARTNER OPPORTUNITIES		
Access to a weekly Bulletin with latest news around PE & sport, physical activity, health & wellbeing from local & national partners	●	●
Access to Koboca Student Voice Platform	●	●
Full access to NEW Members area of website; access to resources, bitesize briefings, access to shared resources, online professional development opportunities, Partners opportunities		●
COMPETITIONS, FESTIVALS & EVENTS		
Access to ALL TeamMCR Competitions, Festivals & Events	●	●
a) Virtual; on your own site with written resources to enable delivery	●	●
b) Local Cluster (L1 Primary School Host) At a local primary school/or at your own site for neighbouring schools	●	●
c) Local Cluster (L1 secondary school non-competitive) At a local secondary school	●	●
d) Local Cluster (L1 secondary school competitive) At a local secondary school	●	●
Access to all TeamMCR Inclusion competitions and festivals	●	●
Access to online booking system for Competitions & Events	●	●
HEALTH & WELLBEING		
Participation in a Change 4 Life Health Festival; station based multi skills challenges aimed at ALL children particularly disadvantaged	●	●
60 Active Minutes to Go Resources	●	●
Support for Change4Life Physical activity clubs		●
Support for active lifestyles in schools through targeted programmes including the MCR Creating Active Schools programme, daily mile resources		●
Cultural Calendar with resources for Personal Challenges		●
RAISING STANDARDS		
FREE PE Subject Leader training: 2 per year (1 place)	●	●
FREE Support for the awarding of the School Gamesmark accreditation for bronze, silver, gold and platinum level.	●	●
FREE Subject specialist PE bespoke cluster training.		●
FREE access to Manchester 's annual PE, school, physical activity Conference 2024 (1 place)		● Worth £100
Support & coordination to access regional & national funding grants		● Worth £50
FREE or subsidised places on selected professional development courses selected from the sport CPD menu.		●
One FREE professional development place on one of the following courses;		●
a) Early Career Teacher for KS1/2. 5-part course over an academic year		●
b) Early Career Teacher for Early Years. 4-part course over an academic year		●
c) High Quality PE professional learning training course for KS1/2 staff		●
d) High Quality Physical Development for Early Years professional learning training course for staff		●
e) Subject Leadership of PE – Everything You Need to Know training		●
*Additional places can be purchased separately		●

Members Benefits 2024/25

	PARTNERSHIP PACKAGE £1350	ENHANCED PACKAGE £1850
FREE Support in reporting the impact of the PE and Sport premium funding Includes full guidance to ensure compliance with the conditions of grant issued by the DfE		● Worth £50
FREE Support & guidance for the leadership & management of PE, school sport & physical activity Includes support for the Headteacher & PE subject leader in the form of both a helpline and email advice support		● Worth £50
FREE Essential Association for PE (AfPE) Safe Practice in PE, Health & Safety Guide (Updated for Sept 2024) The must have support for all your safe practice in PE queries and challenges		● Worth £50
FREE Health & Safety training Essential training to support the PE subject leader to ensure safe practice in PE in your setting		● Worth £200
FREE Health & Safety termly updates Essential health and safety topic support		● Worth £200
SCHOOL TO COMMUNITY LINKS		
Opportunities to access specialist coaching programmes through our partners		●
First Release Offer on MCR Active Legacy City events	●	●
Opportunities to link to Manchester Schools Club Programme		●
Access to the Schools Cycling programme including; festivals & clinics, coaching on site, access to world class facilities		●
Assistance with further development of school/ community links		●
LEADERSHIP, VOLUNTEERING & EMPLOYABILITY SKILLS		
Support for the development of pupil leadership & volunteering including resources for Young Ambassador programme, Physical Activity Leaders (PALs)		●
ADDITIONAL PLACES/ SERVICES @ ADDITIONAL COST		
Training for Yr5/6 Health Ambassador: 6-week programme (2 hrs pw) programme & resources for 16 pupils on your school site	£450	£350
Professional Development Courses - (costs per each individual place)		
a) Early Career Teacher for KS1/2. 5-part course over an academic year	£500	£300
b) Early Career Teacher for Early Years. 4-part course over an academic year	£450	£350
c) High Quality PE professional learning training course for KS1/2 staff	£150	£100
d) High Quality Physical Development for Early Years professional learning training course for staff	£300	£100
e) Subject Leadership of PE – Everything You Need to Know training	£300	£100

MEMBER BENEFITS

For the 2024-25 school year, member schools are able to take advantage of a number of exciting benefits:

Kukri Sports - TeamMCR member schools are entitled to discounts of between 15% and 30% on the full range of Kukri clothing kukrisports.com/uk. The range includes high quality PE uniform, team kits and PE staff uniform.

ProSport Medals - Pro Sport Medals prosportmedals.co.uk provide an extensive range of trophies, awards, medals and much more.

Manchester's Better Leisure Centres - A corporate discount of 20% on memberships is available to school staff at any of the Better Leisure sites in Manchester better.org.uk/manchester.

Members will be able to access these offer through the NEW member's area on TeamMCR website.

Team MCR manages a calendar of 275 competitions, leagues & events across Primary, Secondary and Special schools across 26 different sports & physical activities.

We provide access to local heats leading to Manchester Finals where appropriate with the opportunity for the winning schools having the chance to represent **Manchester at Greater Manchester finals**. 2024/25 will also see more localised, cluster events.



Our Primary Boys and Girls Football leagues continue to grow & have included 72 Girls teams and 96 Boys teams in 2023-24.



This is a series of inclusion specific events and activities, perfect for SEN students, from Special and Mainstream schools, also ideal for students who may be inactive, have low confidence, emotional or behavioural needs.

Sports include: Boccia • Change 4 Life Festival • Cross-Country • Goalball • New Age Kurling • Panathlon • Sportshall Athletics • Swimming • Track & Field Athletics • Tri Golf



Excel competitions give children who are confident and competitive the chance to compete in a welcoming and developmental setting.



INSPIRE events & festivals introduce sports and activities in a fun rather than competitive environment. These festivals and events have a greater emphasis on participation, building physical literacy, skills and confidence. They have a focus on the learning and development of the individual (not the result) and achieving their personal best. These festivals will all be under- pinned by the School Games Values.

Our students love attending competitions and they show great pride in the medals & success that they are able to achieve. **PE Lead**

The sports festivals and competitions have given our children the opportunity to make new friendships. By competing and taking part, it has developed their social skills such as teamwork, communication & respect. **Primary PE Lead**

Through our festivals and events we aim to celebrate the six School Games Values with students:



DETERMINATION



PASSION



RESPECT



HONESTY



SELF BELIEF



TEAMWORK

All of our events will result in **SMILES**

SAFE

participants feel physically and emotionally safe.

MAXIMUM

PARTICIPATION
participants are fully involved all of the time, i.e. not hanging around.

INCLUSIVE

all participants can take part; activities are designed to suit and develop their abilities.

LEARNING

participants develop personal, social, creative, thinking and/or physical skills.

ENJOYMENT

activities recognise individuals' personal needs and interests.

SUCCESS

participants feel they are making progress and getting satisfaction.

While there isn't a specific letter for fair play, **SMILES** will happen for all participants if they feel a sense of fairness. Fairness underpins inclusion, enjoyment and success; it isn't just about 'rules'.

HEALTH & WELLBEING

■■ We are now seeing a really positive impact from the new Health Ambassadors programme. It is not only benefiting the participating pupils by giving them confidence, new skills and independence, but it is also helping them support our younger pupils to enjoy a wide range of activities. This supports the school's wider agenda to ensure that all pupils engage in physical activity for at least 60 minutes per day. ■■

Primary Teacher

LEADERSHIP

■■ I'm enjoying being a playground leader and helping younger children. ■■

Pupil

■■ I have many games and it's great to share them with the other children. ■■

Pupil

■■ I can't wait to deliver my sessions. ■■

Pupil

■■ It's a big role to be a playground leader and I'm proud of it. ■■

Pupil

WORKFORCE DEVELOPMENT

■■ I found the First Aid Training a really useful tool to have when working with children. I now feel more confident when taking children out of school to various competitions. ■■

Primary Staff

■■ I have taught in Manchester for over 20 years and the support given by MPETT is second to none. ■■

Primary Deputy Headteacher

■■ The MPETT courses are essential for all primary school teachers up to date and very relevant advice and information. ■■

Primary teacher



Booking Details: To become a member of TeamMCR for 2024/2025: visit <https://forms.office.com/e/fmZQEsEbMv> (or scan QR above)

TeamMCR
THE POWER TO INSPIRE

teammcr.co.uk

Vicky Marshall	Director	Vicky@teammcr.co.uk
James Crowley	Development & Operations	James@teammcr.co.uk
Hannah Vecchione	Education and Training	Hannah@teammcr.co.uk
Simon Jones	Competition and Events Manager	Simon@teammcr.co.uk
Ben Foster	Programme Coordinator North	Ben@teammcr.co.uk
Basia Kurzak	Programme Coordinator Central & East Manchester	Basia@teammcr.co.uk
Tom Ingham	Programme Coordinator North	Tom@teammcr.co.uk
Robyn McLaren	Sports Programme Coordinator	Robyn@teammcr.co.uk
Martin Wright	League Coordinator	Martin@teammcr.co.uk
Doug Martin	League Coordinator	Doug@teammcr.co.uk



ManchesterSchoolsPE



@ManchesterSchoolsPE



@McrSchoolsPE